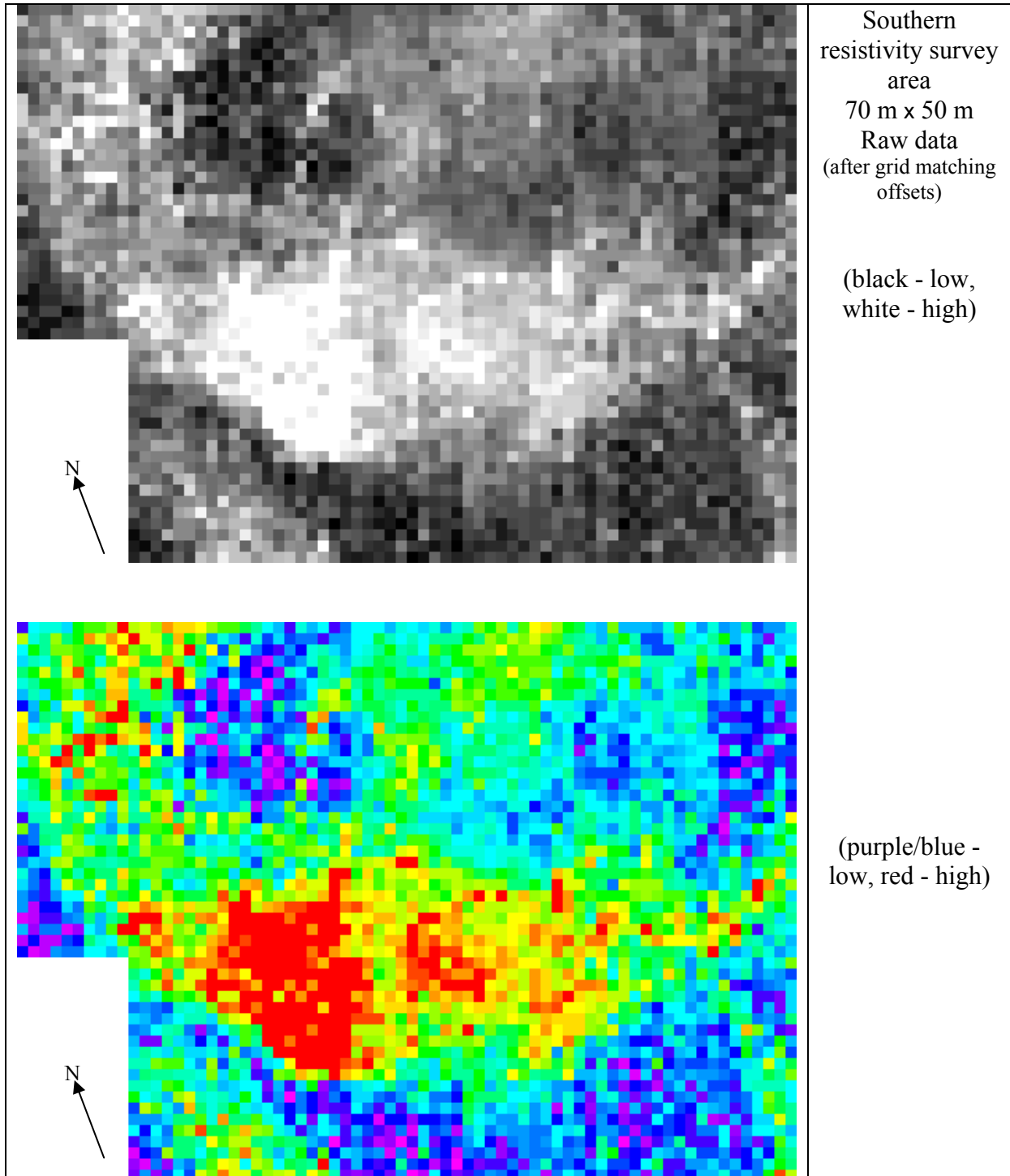
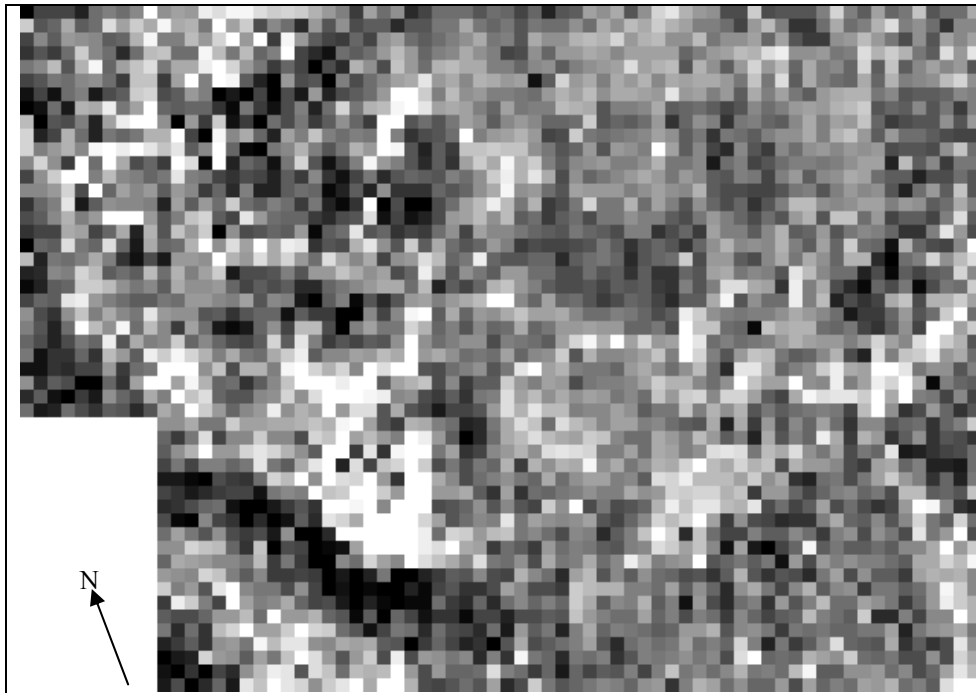


Purpose of survey: To determine if any subsurface features could be detected which would aid in clarifying site usage.

Results:

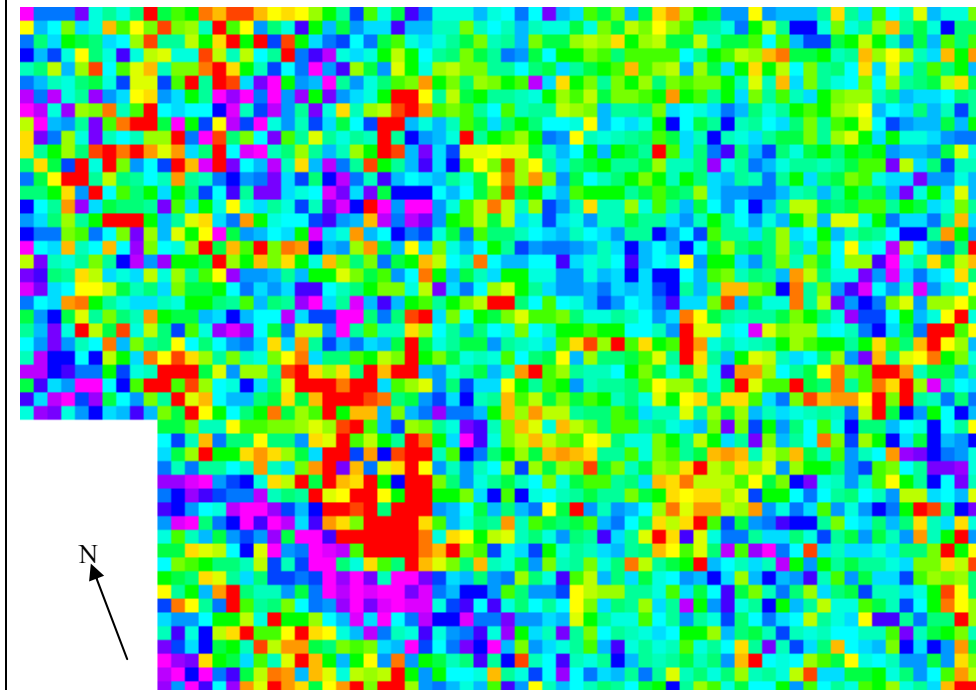
The images in this section are orientated for presentation. They are not to a common scale.



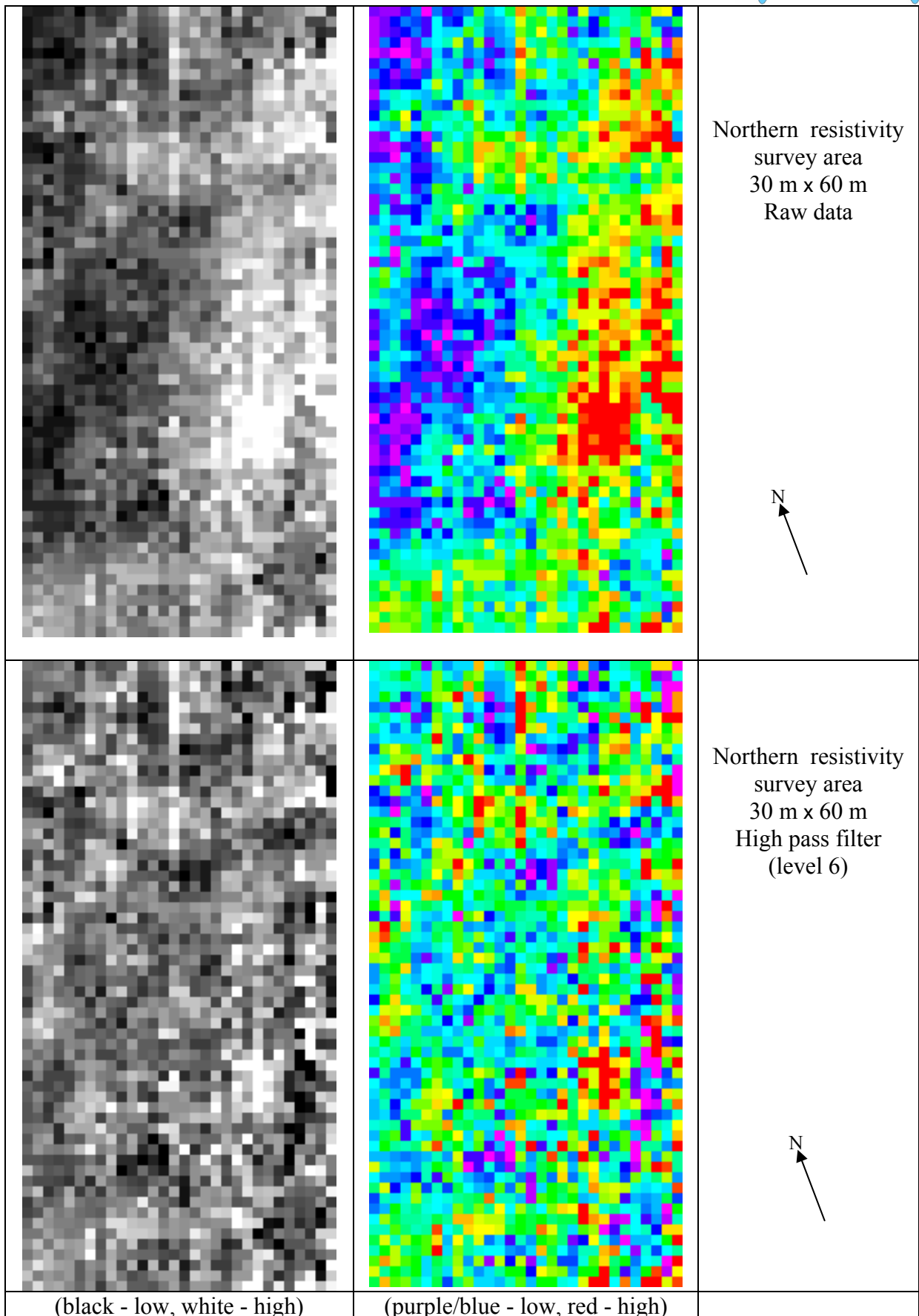


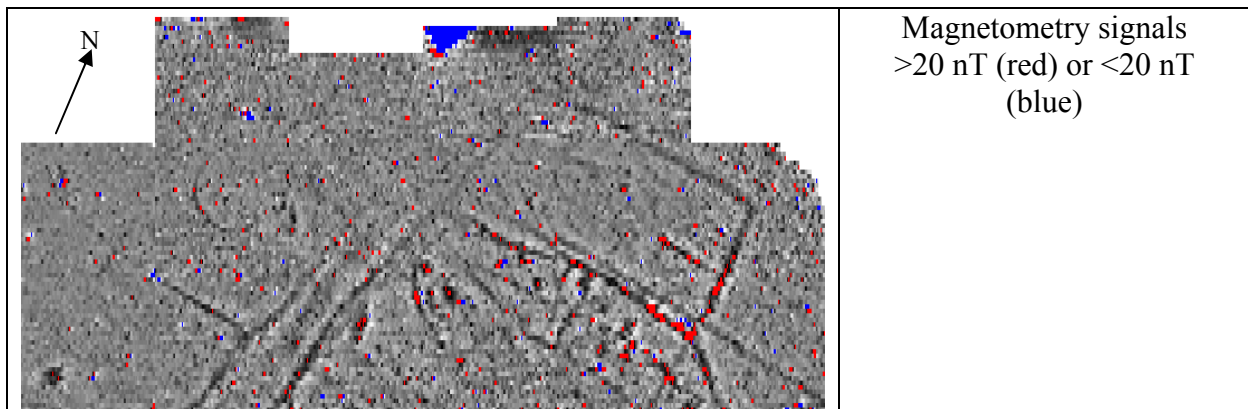
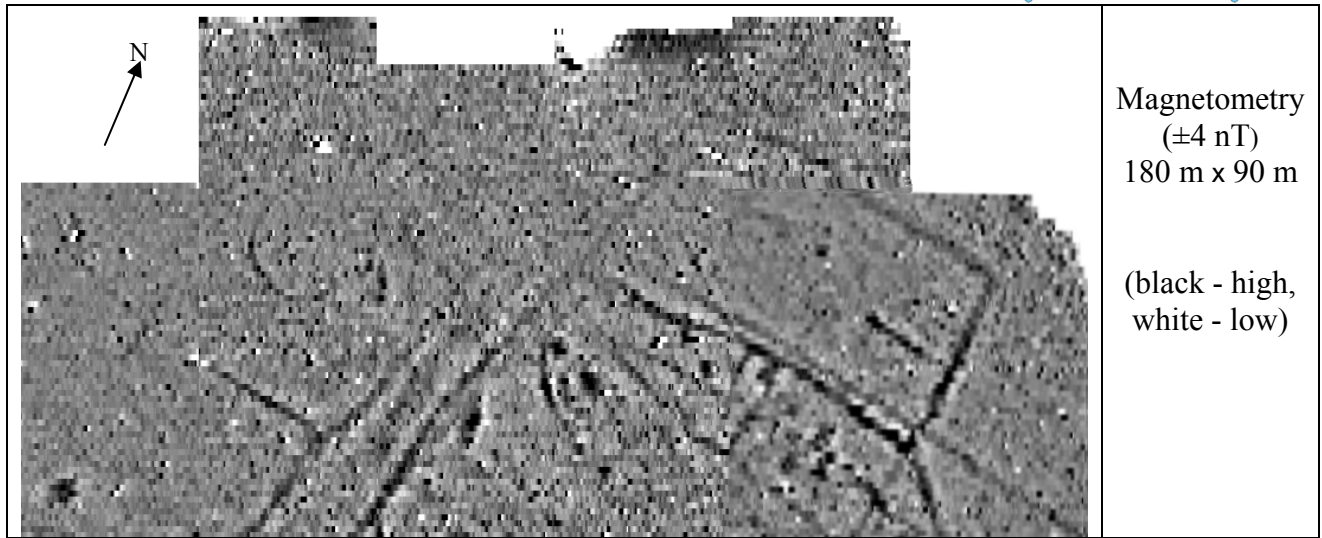
Southern
resistivity
survey area
70 m x 50 m
High pass filter
level 7
(after grid matching
offsets)

(black - low,
white - high)



(purple/blue -
low, red - high)



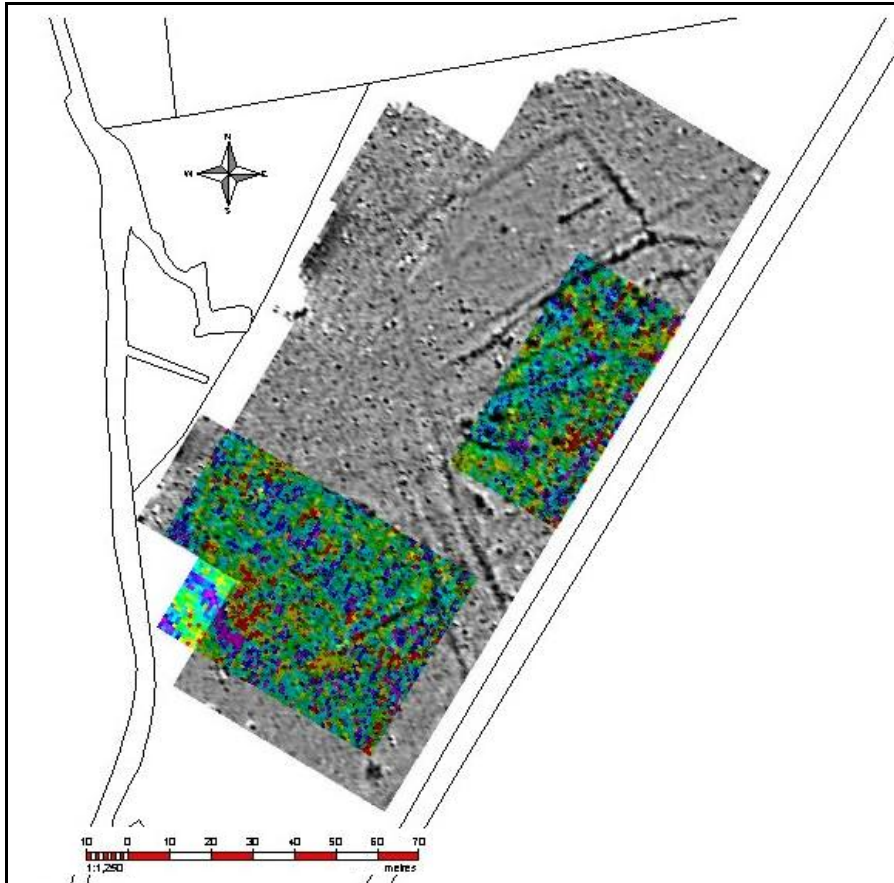


Resistivity

The conditions were poor for resistivity surveys due to the dryness of the soil and the variable surface consolidation. The only features that stand out are in the SW portion of the southern survey where there is an area of high resistivity and a low resistance track immediately S of it. Just to the N of this area of high resistivity is an ill defined curved line of low values broadly around a small area of high resistivity.

Magnetometry

The magnetometry results are weaker, and fade out, towards the W. On the E side there is a trackway running broadly parallel to the N – S stream which lies further W. Respecting this is a rectangular enclosure with a path along its S side which would extrapolate to the point where the present access track meets the road to the E. There are suggestions of more complex activity to the S of the rectangular enclosure, and that the field pattern may have continued to the W. Part of a circular feature about 16 m diameter is visible towards the SW with suggestions of a rectilinear form immediately to the S.



Resistivity and magnetometry results in context

Discussion:

This site manifests itself as a field complex by the side of a stream. The magnetic signals weaken markedly towards the present stream line until they are undetectable. The low resistance band in the SW corner suggests an earlier stream line possibly with the remains of a building on its NE bank. A track follows the stream line to the N and a path branches off this towards the NE. The enclosure to the W of the track and S of the path has indications of more complex activity. The semicircular structure visible in the magnetometry results, for which, despite the poor conditions, there is also some evidence in the resistivity results, suggests a round house with a central hearth.

Raw data are available as separate appendices.
 Magnetometry readings: 8/m, 1 m separation.
 Resistivity readings: 1 m interval, 1 m separation.