

Bottisham Fen Report

On 8 and 15 March 2009 Archaeology RheeSearch Group carried out magnetometry and resistivity surveys on this site at the request of the Cambridge Archaeological Field Group to determine whether evidence of any subsurface features was detectable which might explain a concentration of fieldwalking finds.

Members participating: Brian Bridgland, Pat Davies, Liz Livingstone, Bruce Milner, Ian Sanderson, Gill Shapland, Maureen Storey, Tony Storey.

Site Liaison: Mike Coles.

Site conditions: Short stubble. Weather on day 1, strong wind with showers.

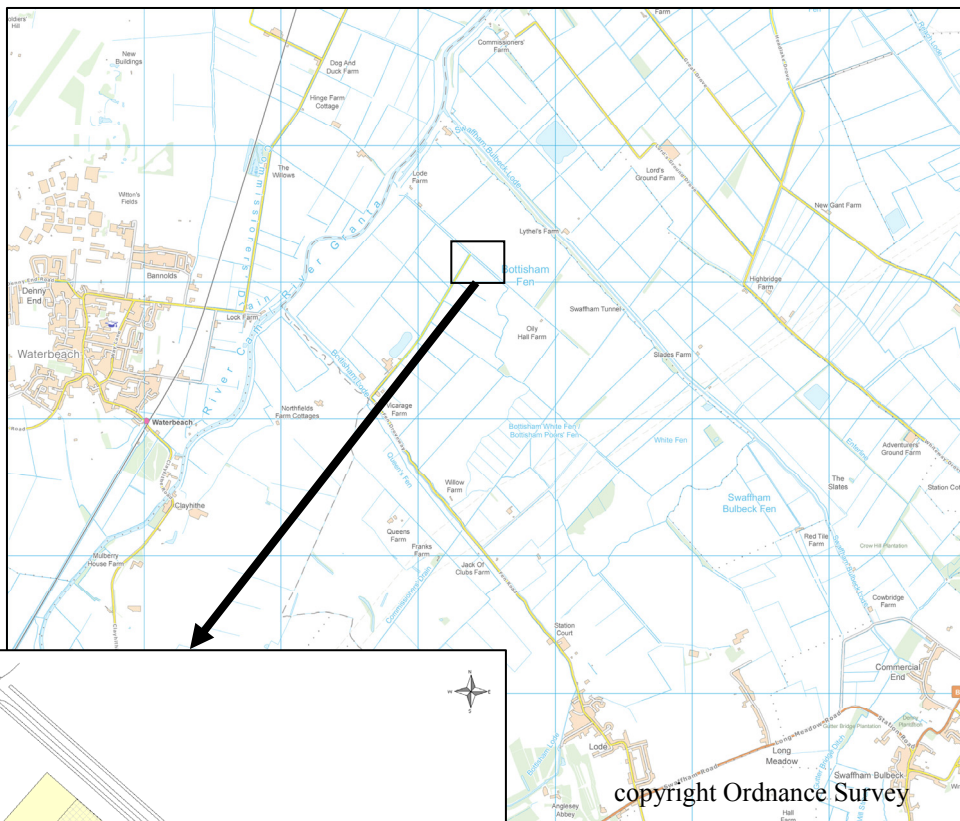
Equipment: Bartington 601 gradiometer; TRCIA 50cm twin probe.

Area covered:

Magnetometry day 1	two 30 m × 30 m grids
Magnetometry day 2	seven 30 m × 30 m grids
Resistivity day 2	two 30 m × 30 m grids

Location: TL 524 661, North of Lode, Cambridgeshire.

Images are orientated with north to the top of the page except where indicated otherwise.



Location plan: Survey areas

(Resistivity survey area is crosshatched, magnetometry area is solid.)

On the ground location points with distances in metres:
NE side of magnetometry grid parallel to and 21.1 from tree line of NE ditch. N corner 59.35 from an iron pipe in the NW field edge at GPS grid ref 52364,66160. Peg on NW side 30 from the N corner 51.63 from the same iron pipe.

Magnetometry readings: 8/m, 1 m separation. Resistivity readings: 1 m interval, 1 m separation.
 Raw data are available as separate appendices



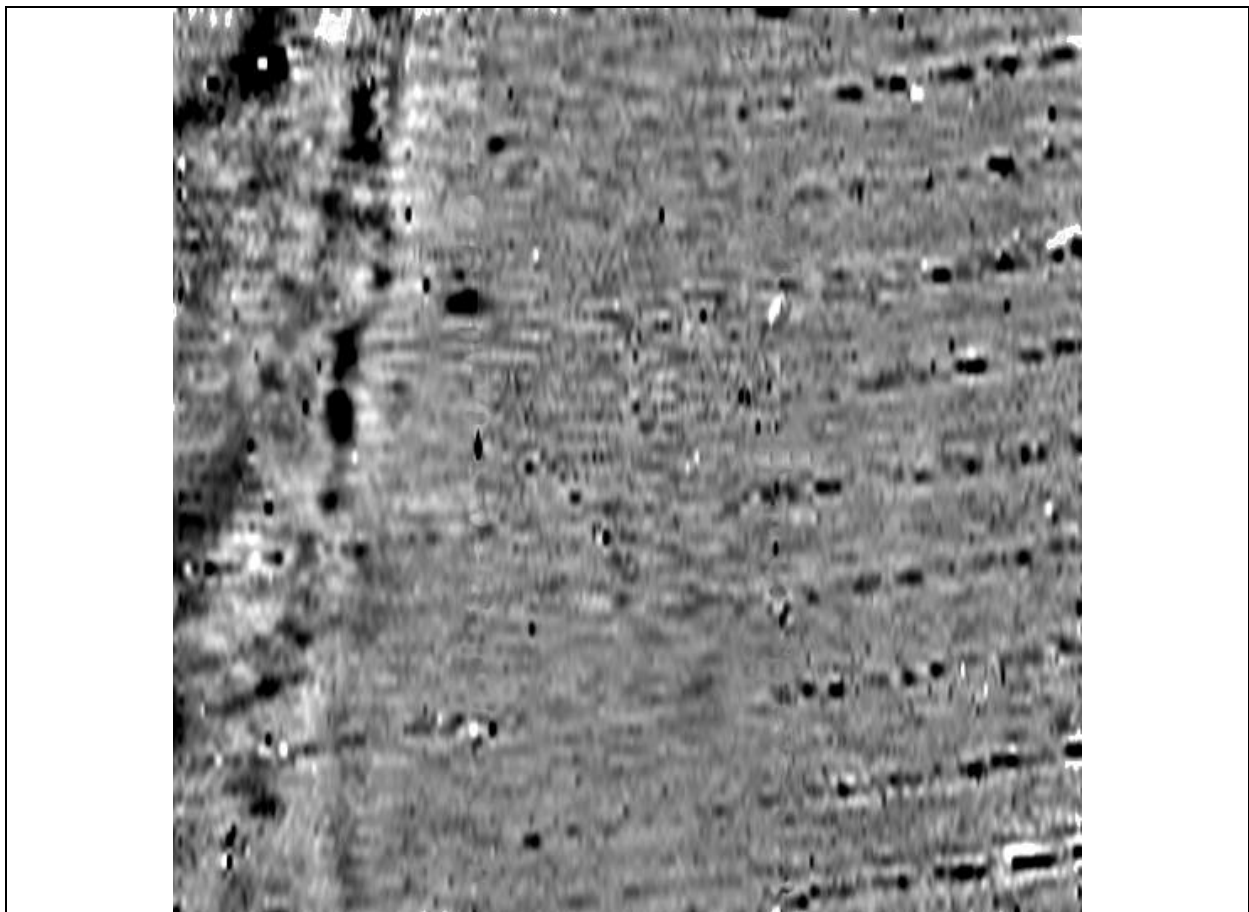
Purpose of survey: To determine if any subsurface structures were detectable which might explain a concentration of field walking finds.

Results:

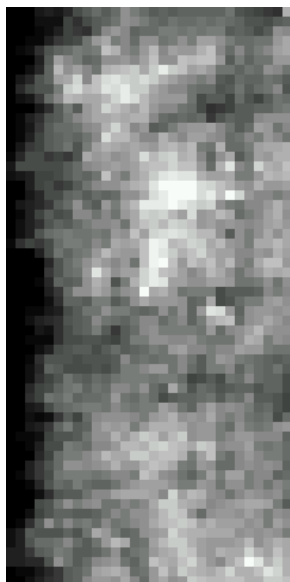
Images orientated with N to the top of the page, not to a common scale

	<p>Magnetometry results ± 5 nT, 90 m x 90 m black high, white low</p>
	<p>Resistivity results Resistivity (raw data) 60 m x 30 m (purple blue low, red high)</p>

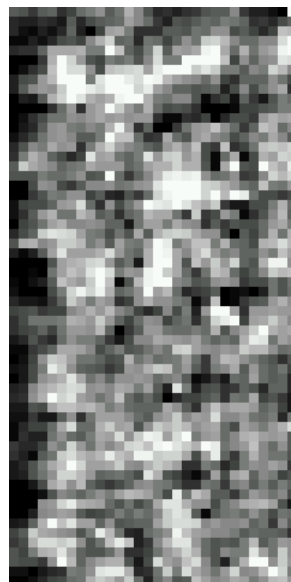
Individual survey area results, rotated for presentation



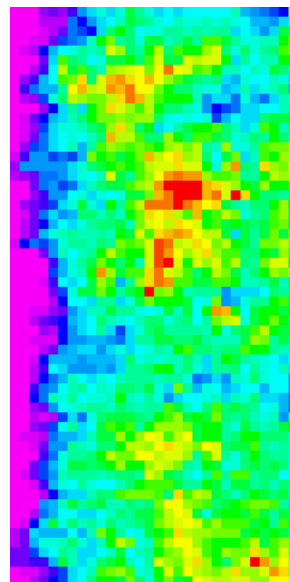
Magnetometry, 90 m x 90 m ± 5 nT
(black high, white low)



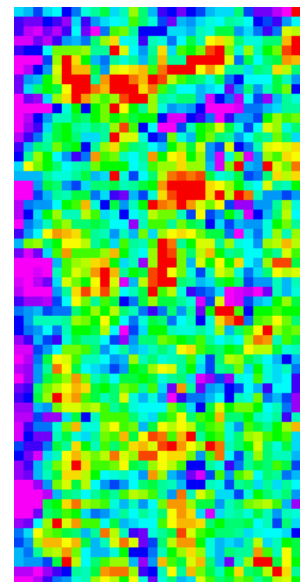
raw data



high pass filter 6



raw data



high pass filter 6

Resistivity 30 m x 60 m
(black low, white high or purple blue low, red high)

Report by Dr I Sanderson for Archaeology RheeSearch