



Harlton Report

In September 2007 Archaeology RheeSearch Group carried out magnetometry and resistivity surveys on this site.

Members participating: Pat Davies, Brian Bridgland, Liz Livingstone, Maureen Storey and Tony Storey.

Site Liaison: Mike Coles

Site conditions: Harrowed field.

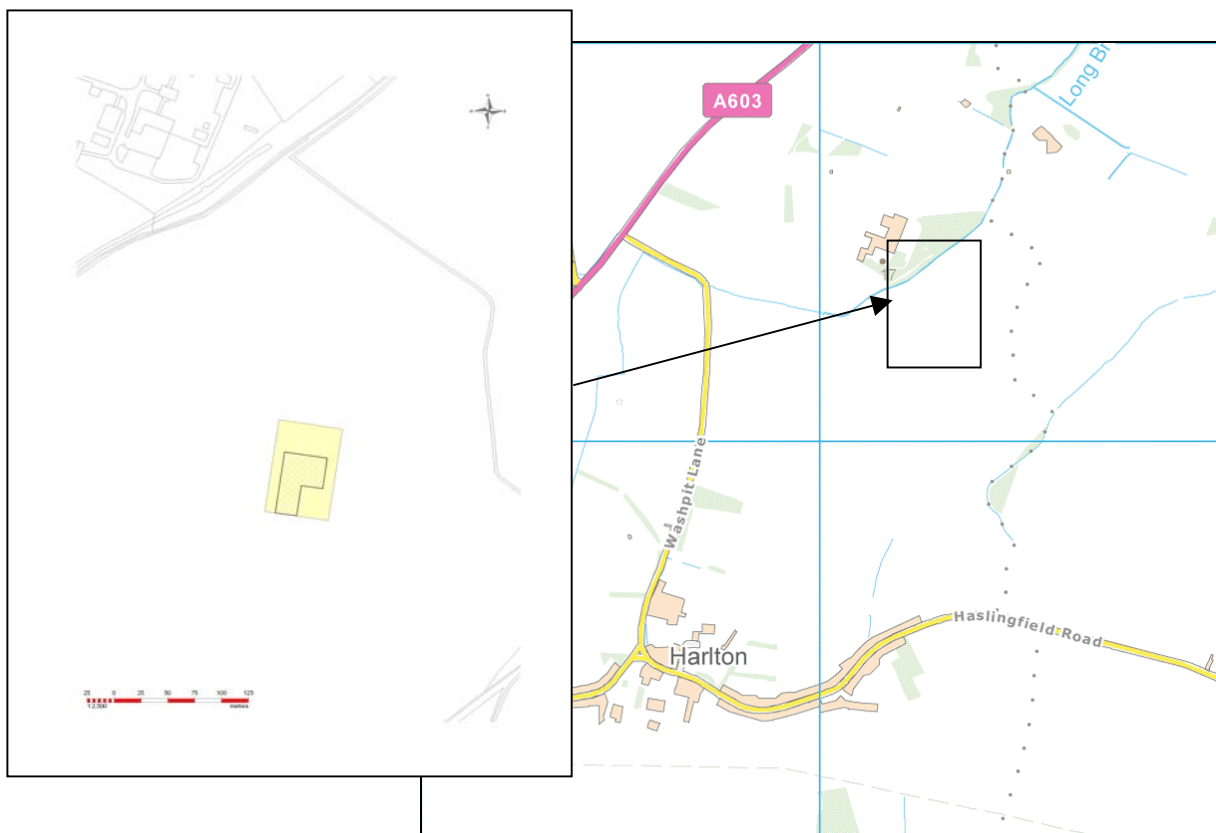
Equipment: Bartington 601 gradiometer; TRCIA 50 cm twin probe.

Magnetometry readings: 8/m, 1 m separation.

Resistivity readings: 1 m interval, 1 m separation.

Raw data are available as separate appendices.

Location: TL 393532, East of Washpit Lane, Harlton, Cambs.



Location plan: Survey areas

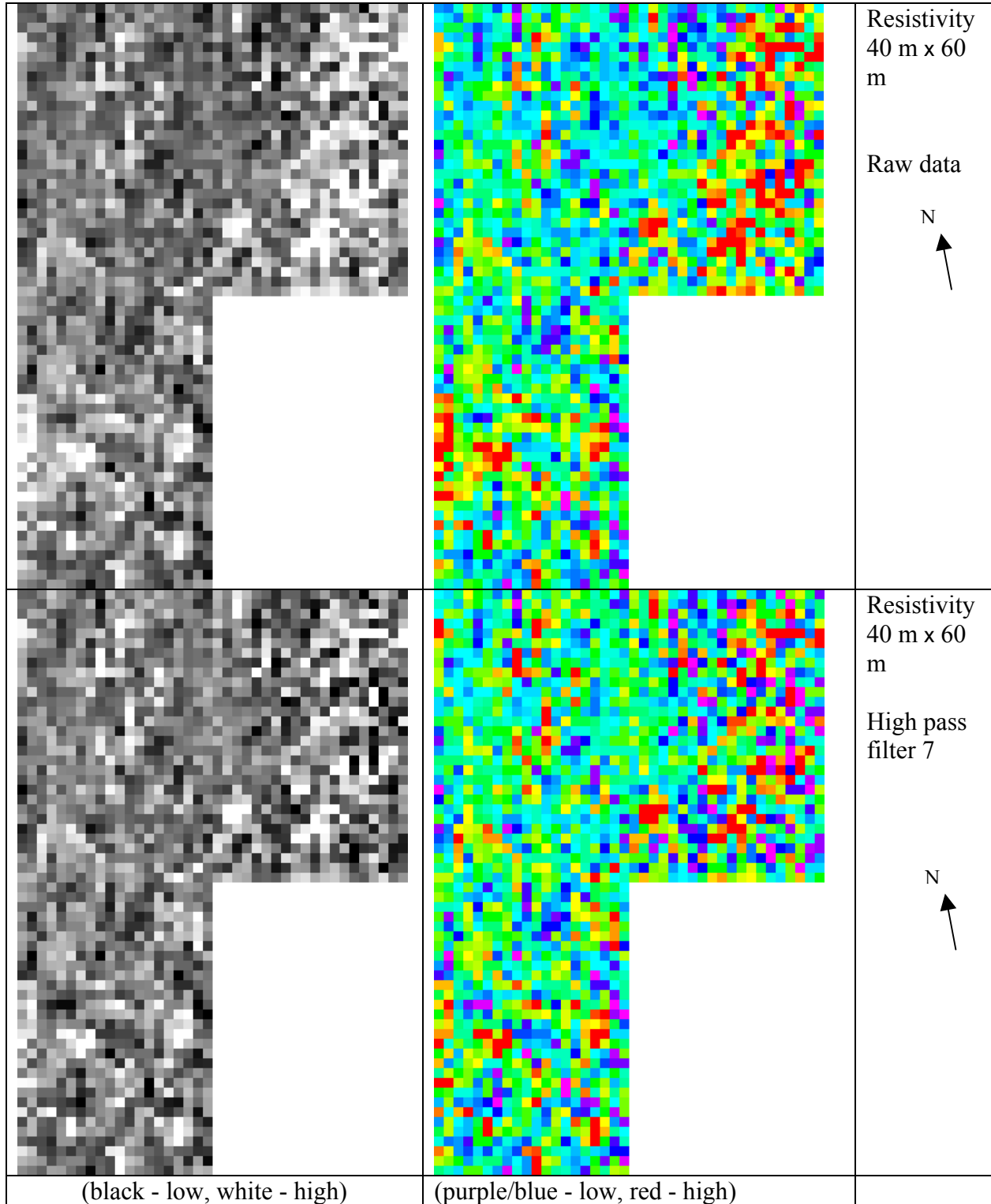
(resistivity survey areas hatched, magnetometry areas solid)

Purpose of survey: The purpose of this survey was to determine if any subsurface features could be detected to explain fieldwalking finds of Roman pottery made by the Cambridge Archaeology Field Group.

Results:

The images in this section are orientated for presentation. The images are not to a common scale.

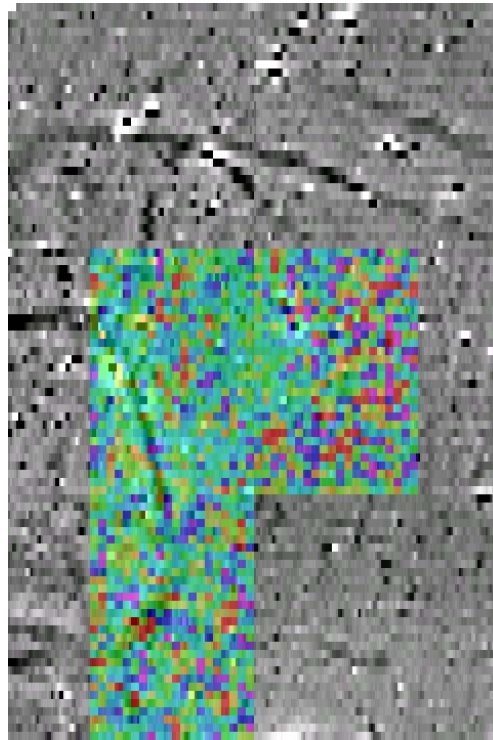
Resistivity



Magnetometry



Magnetometry 60 m x 90 m range +3 to -3 nT



Superimposition of resistivity and magnetometry results



Magnetometry and resistivity results in context



Discussion:

Two parallel ditch lines about 10 m apart running NW – SE cross the N part of the magnetometry survey area. The W side of the survey has part of a feature which almost certainly extends further to the W. It may be a rectilinear form with rounded corners about 40 m wide. The resistivity results show no identifiable patterns but there is a concentration of higher responses in the E part of the survey.

Report by Dr I Sanderson for Archaeology RheeSearch